



RELEASE AND UNWIND

# Hollywood

1400 Marina Drive  
Hollywood, FL 33019



## GUEST INFORMATION

Scan this QR code to view  
the Guest Information Packet online



Toll Free: 1-888-LOGGER2


Direct: 954-457-8557 | Fax: 954-458-5927





RELEASE AND UNWIND

## Directions to Loggerhead Club & Marina® – Hollywood

### By Water: (VHF Channel # 16)


-  You can access Loggerhead Club & Marina - Hollywood from either Port Everglades in Ft. Lauderdale (north of our facility) or Baker's Haulover Inlet (south). (Please note: Haulover Inlet's fixed bridge clearance is 32 feet.) Loggerhead Club & Marina - Hollywood is located south of the Hollywood Blvd. Bridge and north of the Hallandale Beach Blvd. Bridge on the west side of the Intracoastal Waterway at Red Marker #42. There is a sign that reads "Harbor Islands Marina" (our former name) on the bulkhead at the entrance channel. We are approximately 6 miles south of Port Everglades and 5 miles north of Baker's Haulover Inlet. There are three bascule bridges between the facility and Port Everglades. These bridges open on schedule at the quarter-hour.

### By Land:

-  From I-95: Exit at Hallandale Beach Blvd. Travel east on Hallandale Beach Blvd. for approximately 2.5 miles to Three Islands Blvd. (do not cross the bridge over the Intracoastal Waterway on Hallandale Beach Blvd.). Turn left onto Three Islands Blvd., pass through the security gate (it opens automatically upon approach) and travel approximately 1.25 miles to the entrance to the Harbor Islands neighborhood. Loggerhead Club & Marina - Hollywood is located in the luxurious Harbor Islands neighborhood. Stop at the gate and request entrance to the marina. The security guard will admit you and give directions to the harbormaster's office. Travel time from I-95 is approximately 15 minutes.
-  From the Florida Turnpike: Exit at I-595 eastbound. Follow I-595 east to I-95 south. Travel approximately 3 miles south on I-95 to Hallandale Beach Blvd. Travel east on Hallandale Beach Blvd. approximately 2.5 miles to Three Islands Blvd. (do not cross the bridge over the Intracoastal Waterway on Hallandale Beach Blvd.). Turn left onto Three Islands Blvd., pass through the security gate (it opens automatically upon approach) and travel approximately 1.25 miles to the entrance to the Harbor Islands neighborhood. Loggerhead Club & Marina - Hollywood is located in the luxurious Harbor Islands neighborhood. Stop at the gate and request entrance to the marina. The security guard will admit you and give directions to the harbormaster's office. Travel time from the Florida Turnpike is approximately 20 minutes.

## Marina Information


### Dock/Rack Layout

-  The Loggerhead Hollywood Marina has a total of 190 wet slips that can accommodate boats from 30 to 120 feet in length.




**RELEASE AND UNWIND**


### Marine Fuel

 This Loggerhead location does not offer fuel. However, fuel delivery by truck is available at your slip through Admiral Oil. Please contact the marina office for details.


### On- Site Utilities

 The marina offers free pump-out service for Loggerhead members.



### Marina Depth

 Hollywood's controlling depth is approximately 8 feet at low tide for both the entrance channel and within the fairways and slips.

### In the Event of an After-Hours Emergency

 The marina office phones are forwarded nightly to an answering service. The service will contact the harbormaster or another Loggerhead Club & Marina official in the event of an emergency. If the incident involves an injury or the law is being broken, please dial 911. A call to the marina office will also be appreciated.

### Fixed bridges in the area? If so, what is the height limits?

-  There are no fixed bridges between the Marina and the Ft. Everglades inlet, only drawbridges.
-  The Baker's Haulover Inlet has a fixed bridge with a 32' clearance. After the bridge over the inlet, all other bridges between the marina and inlet are draw bridges.

### In the Area:

#### Airports

Palm Beach International Airport	1000 Palm Bch Intl Airport Unit 125, West Palm Beach, FL	(561) 471-7400
Ft. Lauderdale International Airport	100 Aviation Blvd, Fort Lauderdale, FL	(954) 359-1200
Miami International Airport	N.W. 20th Street & Lejune Road, Miami, FL	(305) 871-4100

#### Bait & Tackle

Angler's Bait and Tackle	230 E Dania Beach Blvd, Dania, FL	(954) 925-9995
Haulover Marine Center	15000 Collins Ave, Bal Harbour, FL	(305) 945-3934



**RELEASE AND UNWIND**

### Banks

Bank of America	3900 S Ocean Dr, Hollywood, FL	(954) 455-3597
SunTrust	1900 E Hallandale Beach Blvd, Hallandale, FL	(954) 455-2321
Bank Atlantic	2309 E. Hallandale Beach Blvd, Hallandale, FL	(305) 456-1155

### Drugstores

Walmart Pharmacy	2551 E Hallandale Beach Blvd, Hallandale Beach, FL	(954) 455-8355
CVS	1600 S. Federal Hwy, Hollywood, FL	(954) 921-7747

### Entertainment

AMC Theatres Aventura 24	19501 Biscayne Blvd, Aventura, FL	(305) 466-0450
Aventura Mall	19501 Biscayne Blvd Ste 3206, Miami, FL	(305) 935-1110
Bal Harbor Shops	9700 Collins Ave Ste 106, Bal Harbour, FL	(305) 866-0311

### Golf and Tennis

Diplomat Country Club & Spa	501 Diplomat Pkwy, Hallandale Beach, FL	(954) 883-4000
Haulover Golf & Tennis	10800 Collins Ave, Bal Harbour, FL	(305) 940-6719

### Grocery Stores

Publix Supermarket, Pharmacy, & Liquor Store	1400 E Hallandale Beach Blvd, Hallandale Beach, FL	(954) 454-2143
--	--	----------------

### Health Care

Memorial Reg Hospital South	3600 Washington Street, Hollywood, FL	(954) 966-4500
Urgent Care of FL (walk-in clinic)	1318 SE 17th St. Ft. Lauderdale, FL	(954) 200-6001
Broward Animal Hospital	1180 N. Dixie Hwy, Hollywood, FL	(954) 925-2467
Aventura Animal Hospital	19101 Biscayne Blvd, Miami, FL	(305) 933-2287



**RELEASE AND UNWIND**

### Health Clubs

Olympia Gym and Fitness Center	20335 Biscayne Blvd Ste 200, Aventura, FL	(305) 932-3500
Premier Health and Fitness	1250 E Hallandale Beach Blvd Ste 208, Hallandale Beach, FL	(954) 455-8700

### Hotels

Westin Diplomat Resort & Spa	3555 S Ocean Dr, Hollywood, FL	(954) 602-6000
Crowne Plaza Hotel	4000 S Ocean Dr, Hollywood, FL	(954) 454-4334
Mar Bay Hotel	26 Diplomat Pkwy, Hallandale Beach, FL	(954) 454-5881

### Liquor Stores

Avyness Goldstar Liquors	2511 E Hallandale Beach Blvd, Hallandale Beach, FL	(954) 457-2012
Big Daddy's Liquors	4 N Federal Hwy, Hallandale Beach, FL	(954) 458-2551

### Mail & Shipping

US Post Office	1800 E Hallandale Beach Blvd, Hallandale Beach, FL	(954) 455-0493
FedEx	1807 N Young Cir, Hollywood, FL	(954) 925-2036
Mail Box Etc.	1835 E. Hallandale Beach Blvd, Hallandale, FL	(954) 454-1131

### Marine Sales –see office staff for more information

<b>Exclusive Yacht Group</b>	<b>140 Intracoastal Pointe Drive Suite 110, Jupiter, FL</b>	<b>(561) 745-2780</b>
HMY Yacht Sales	801 NE 3rd St, Dania, FL	(954) 921-4541
Seven Seas Yacht Sales	1500 W Broward Blvd, Fort Lauderdale, FL	(954) 463-8143

### Marine Services

West Marine	1720 E Hallandale Beach Blvd, Hallandale Beach, FL	(954) 457-3848
Seatow Miami		(305) 673-2869
Please see office staff for more information		



## RELEASE AND UNWIND

### Restaurants

Matteo's Restaurant	1825 E Hallandale Beach Blvd, Hallandale Beach, FL	(954) 455-4050
Joseph's On the Water	1975 S Ocean Dr, Hallandale Beach, FL	(954) 455-6996

### Dockside Restaurants

Capone's Pizza & Raw Bar	1004 N. Ocean Drive, Hollywood, FL	(954) 920-1549
Giorgio's Bakery & Bistro	800 N. Ocean Drive, Hollywood FL	(954) 929-5550
Joe's Tiki Bar	1318 N. Ocean Drive, Hollywood, FL	(954) 929-9897
Le Tub	1100 N. Ocean Drive, Hollywood, FL	(954) 921-9425
Jimbo's Sandbar & Restaurant	6200 N. Ocean Drive, Hollywood, FL	(954) 927-9560

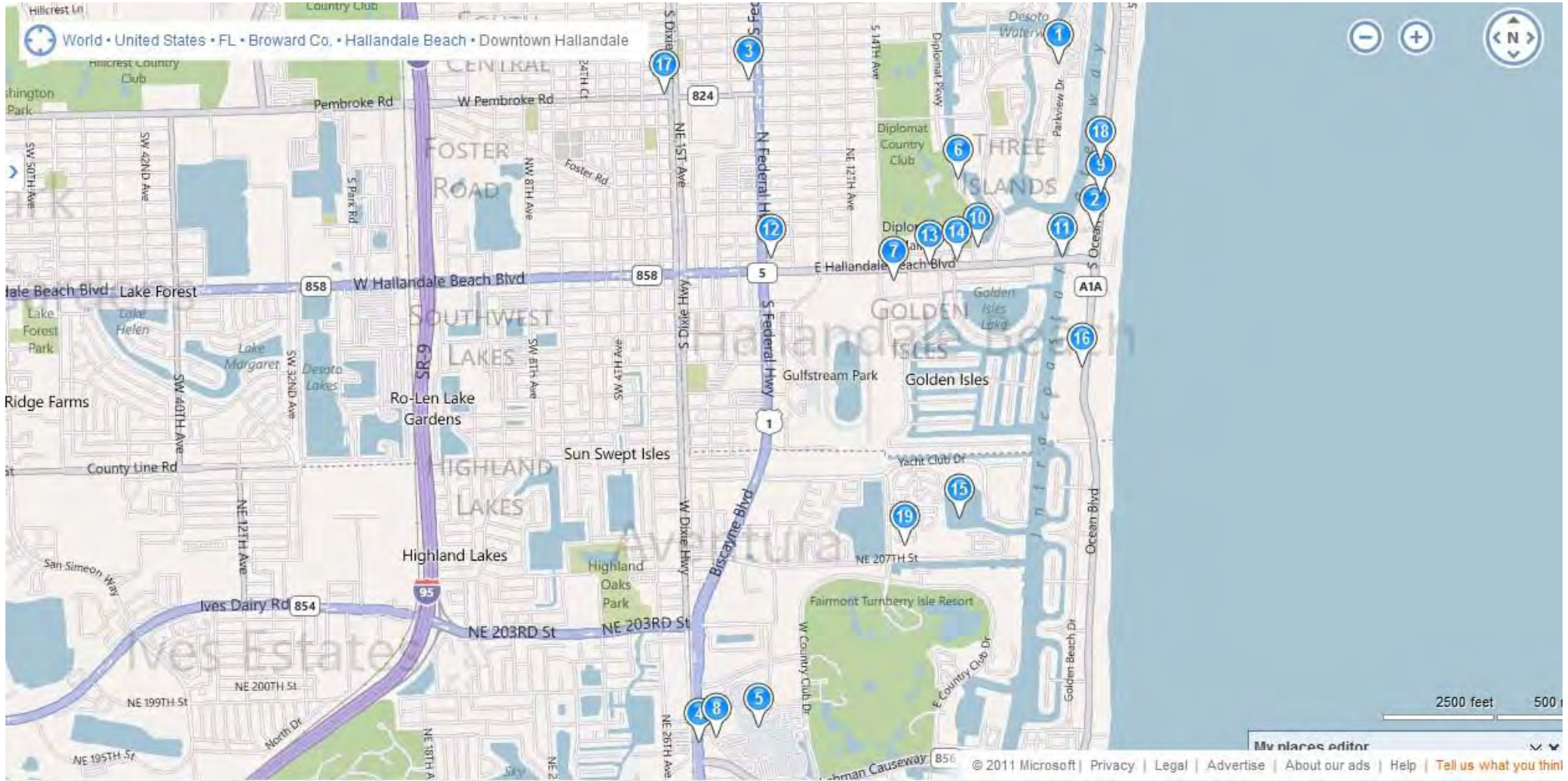
### Transportation Services

Friendly Checker Cab	2223 Pembroke Road, Hollywood, FL	(954) 923-9999
Broward Taxi	2106 N Dixie Hwy, Hollywood, FL	(954) 456-1111
International Limo of South Florida	2300 SW 56th Ter, Hollywood, FL	(954) 983-1292
Enterprise Rent a Car	25 W Pembroke Rd, Hallandale Beach, FL	(954) 455-8976
Hertz Rent a Car	3250 S Ocean Dr, Hollywood, FL	(954) 454-8914
Beach Bum Bike & Skate	101 N Ocean Dr Ste 135, Hollywood, FL	(954) 925-2453
Hot Scooter Rental & Bikes	440 S Dixie Hwy, Hollywood, FL	(954) 923-3155

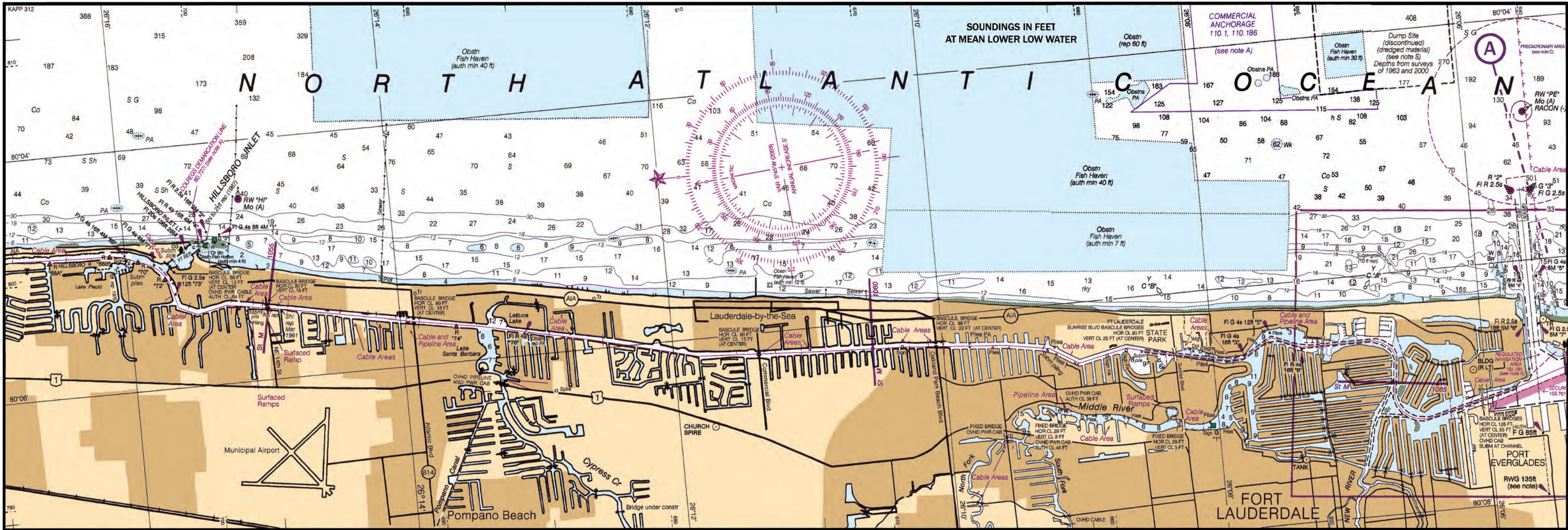
### US Customs & Immigration

US Immigration and Customs Enforcement – Ft. Lauderdale	1800 Eller Drive Suite 104, Fort Lauderdale, FL	(954) 761-2000
US Immigration and Customs Enforcement – Miami Seaport	903 South America Way Miami, FL	(305) 536-4758 Ext: 213

## Hollywood Area Map



- |  |   |  |
|--|---|--|
| <p><b>1. Loggerhead Club &amp; Marina</b><br/>1400 Marina Dr, Hollywood, FL</p>              | <p><b>7. Publix Super Market - Publix Liquor</b><br/>1400 E Hallandale Beach Blvd, Hallandale Beach, FL</p> | <p><b>13. West Marine</b><br/>1720 E Hallandale Beach Blvd, Hallandale Beach, FL</p>         |
| <p><b>2. Bank of America</b><br/>3900 S Ocean Dr, Hollywood, FL</p>                          | <p><b>8. Aventura Animal Hospital</b><br/>19101 Biscayne Blvd, Miami, FL</p>                                | <p><b>14. Matteo's Restaurant</b><br/>1825 E Hallandale Beach Blvd, Hallandale Beach, FL</p> |
| <p><b>3. CVS Pharmacy</b><br/>1600 S Federal Hwy, Hollywood, FL</p>                          | <p><b>9. The Westin Diplomat Resort and Spa</b><br/>3555 S Ocean Dr, Hollywood, FL</p>                      | <p><b>15. Loggerhead Club &amp; Marina - Aventura</b></p>                                    |
| <p><b>4. AMC Theatres Aventura 24</b><br/>19501 Biscayne Blvd, Aventura, FL</p>              | <p><b>10. Mar Bay Hotel</b><br/>26 Diplomat Pkwy, Hallandale Beach, FL</p>                                  | <p><b>16. Josephs On the Water</b><br/>1975 S Ocean Dr, Hallandale Beach, FL</p>             |
| <p><b>5. Aventura Mall</b><br/>19501 Biscayne Blvd Ste 3206, Miami, FL</p>                   | <p><b>11. Avyness Goldstar Liquors</b><br/>2511 E Hallandale Beach Blvd, Hallandale Beach, FL</p>           | <p><b>17. Enterprise Rent-A-Car</b><br/>25 W Pembroke Rd, Hallandale Beach, FL</p>           |
| <p><b>6. Diplomat Country Club &amp; Spa</b><br/>501 Diplomat Pkwy, Hallandale Beach, FL</p> | <p><b>12. Big Daddy's Liquors</b><br/>4 N Federal Hwy, Hallandale Beach, FL</p>                             | <p><b>18. Hertz Rent A Car</b><br/>3250 S Ocean Dr, Hollywood, FL</p>                        |
|  |   | <p><b>19. Bally Total Fitness</b><br/>3455 NE 207th St, Miami, FL</p>                        |



**CAUTION**  
Temporary changes or defects in aids to navigation are not indicated on this chart. See Local Notice to Mariners.

**CAUTION**  
Improved channels shown by broken lines are subject to shoaling, particularly at the edges.

**CAUTION**  
Small craft should stay clear of large commercial and government vessels even if small craft have the right-of-way.  
All craft should avoid areas where the skin divers flag, a red square with a diagonal white stripe, is displayed.

**RADAR REFLECTORS**  
Radar reflectors have been placed on many floating aids to navigation. Individual radar reflector identification on these aids has been omitted from this chart.

**AIDS TO NAVIGATION**  
Consult U.S. Coast Guard Light List for supplemental information concerning aids to navigation.

**WARNING**  
The prudent mariner will not rely solely on any single aid to navigation, particularly on floating aids. See U.S. Coast Guard Light List and U.S. Coast Pilot for details.

**INTRACOASTAL WATERWAY**  
Project Depths  
12 feet Norfolk, Va. to Fort Pierce, Fla.  
10 feet Fort Pierce, Fla. to Miami, Fla.  
7 feet Miami, Fla. to Cross Bank, Florida Bay.  
The controlling depths are published periodically in the U.S. Coast Guard Local Notice to Mariners.

**Distances**  
The Waterway is indicated by a magenta line. Mileage distances along the Waterway are in Statute Miles, southward from Norfolk, Virginia, and indicated thus:  $\overline{\hspace{1cm}}$ . Tables for converting Statute Miles to International Nautical Miles are given in U.S. Coast Pilot 4.  
Courses are TRUE and must be CORRECTED for any variation and compass deviation.

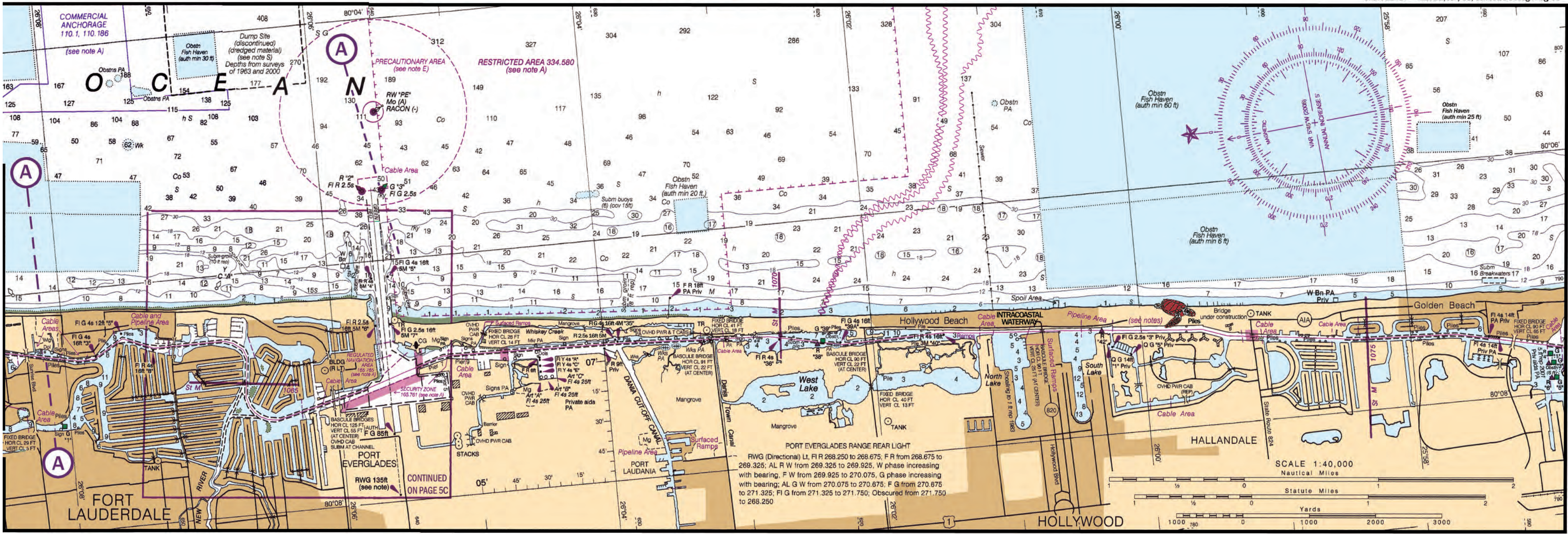
**INTRACOASTAL WATERWAY AIDS**  
The U.S. Aids to Navigation System is designed for use with nautical charts and the exact meaning of an aid to navigation may not be clear unless the appropriate chart is consulted.  
Aids to navigation marking the Intracoastal Waterway exhibit unique yellow symbols to distinguish them from aids marking other waterways.  
When following the Intracoastal Waterway southward from Norfolk, Virginia, to Cross Bank in Florida Bay, aids with yellow triangles should be kept on the starboard side of the vessel and aids with yellow squares should be kept on the port side of the vessel.  
A horizontal yellow band provides no lateral information, but simply identifies aids to navigation as marking the Intracoastal Waterway.

**SUPPLEMENTAL INFORMATION**  
Consult U.S. Coast Pilots 4 & 5 for important supplemental information.

**DISCLAIMER**  
This chart is published and distributed by U.S. Chart Services, Inc. U.S. Chart Services, Inc. has copied, cropped and edited data from OceanGrafix charts to produce this chart. Some of the copied data is copyright protected by OceanGrafix and is used with permission. OceanGrafix makes no claims that the copied data is accurate or suitable for the intended use of the recipient or purchaser and offers no warranty concerning the chart's fitness for use. The data contained in this chart may not be reproduced in any form without written permission from U.S. Chart Services, Inc. and OceanGrafix. U.S. Chart Services, Inc., as well as advertisers and distributors of this product can not be responsible for any errors or omissions which may occur in the printing of this imaged product. All persons using this product are CAUTIONED to use the practices of good seamanship and consult Notice to Mariners when using this information.

**NOTE A**  
Navigation regulations are published in Chapter 2, U.S. Coast Pilots 4 and 5. Additions or revisions to Chapter 2 are published in the Notice to Mariners. Information concerning the regulations may be obtained at the Office of the Commander, 7th Coast Guard District in Miami, Florida, or at the Office of the District Engineer, Corps of Engineers in Jacksonville, Florida. Refer to charted regulation section numbers.

**LOGGERHEAD**  
CLUB & MARINA  
Hollywood, FL  
954-457-8557 • Toll Free: 888-LOGGER2  
www.loggerheadclubandmarina.com



PORT EVERGLADES RANGE REAR LIGHT  
RWG (Directional) Lt, Fl R 268.250 to 268.675; F R from 268.675 to 269.325; AL R W from 269.325 to 269.925, W phase increasing with bearing; F W from 269.925 to 270.075, G phase increasing with bearing; AL G W from 270.075 to 270.675; F G from 270.675 to 271.325; Fl G from 271.325 to 271.750; Obscured from 271.750 to 268.250

SCALE 1:40,000  
Nautical Miles  
Statute Miles  
Yards